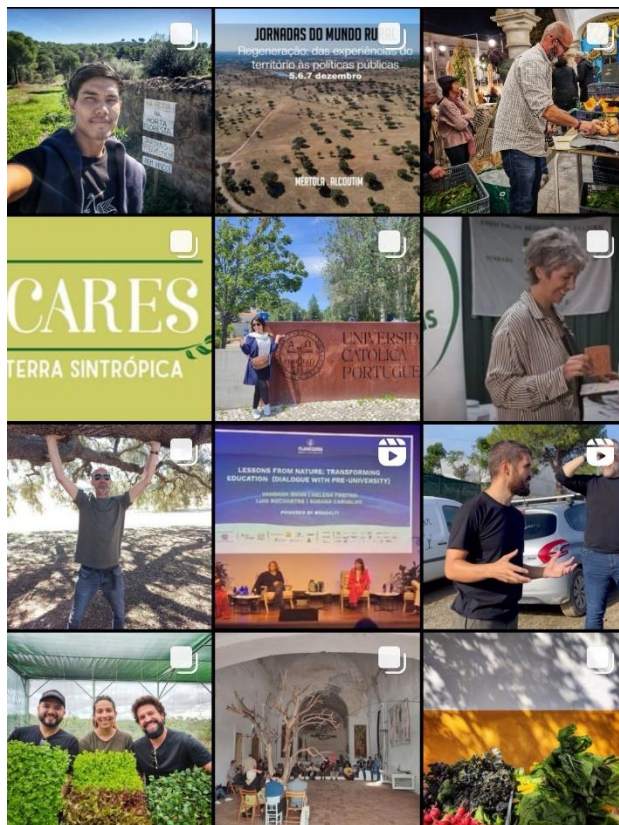


# Mértola, a Regenerative Lab for the future of semiarid territories

## Annual Report 2023

30.01.2024



<b>Reporting Organisation</b>	Associação Terra Sintrópica
<b>Implementing Organisation</b>	Associação Terra Sintrópica
<b>Primary Contact for LBF</b>	Inês Afonso Ximenes
<b>Program Coordinator</b>	Marta Cortegano

<b>Time Span Program</b>	[01.01.2023 – 31.12.2025]
<b>Reporting Period</b>	[01.01.2023 – 31.12.2023]
<b>Country / Region / Area</b>	Portugal/Alentejo/Mértola
<b>LBF-Number</b>	TER-18-076

<b>Planned Total Program Amount [2023-2026]</b>	1 281 053,00€
<b>LBF Grant Approved:</b>	600 000,00€
<b>LBF Grant Paid up to Date:</b>	200 000,00€
<b>Next Payment LBF:</b>	02-2024

# Table of Contents

1. Program	3
1.1 Situation	3
1.2 Course of the Program	3
1.3 Target Group	4
1.4 Stakeholders and Network	5
1.5 Opportunities and Risks	5
1.6 Monitoring and Evaluation	6
2. Impact	7
2.1 Achieved Goals / Outcomes	7
2.2 Adaptions and Innovations	9
2.3 Lessons Learnt	9
2.4 Outlook into [YYYY] [the upcoming year]	9
3. Implementing Organisation	10
3.1 Major Changes, Challenges and/or Opportunities	10
3.2 Capacity Building and Organisational Development	10
4. Finances	12
5. Further Information and Attachments	13



# 1. Program

## 1.1 Situation

The year 2023 was once again a year of extreme drought, which worsens from year to year. The readjustment of the Agroecology Center, with increasingly adapted practices, and adjusted uses reduced internal conflicts over water. Even so, due to a rupture in the system, there was a critical period, with a total absence of water and the municipality's intervention was requested. Political tension over the use of water is difficult to manage, since in the critical period, water support needs are high for many sectors and entities (public and private) and it is not easy for the municipality to manage these tensions.

In the pilot projects that ATS develops, the mismatch between the proposals adapted to the needs of the territory and the current legislation or the mindset of the entities, particularly those related to nature conservation or research, is often felt. For example, the constant attempt by partners to simplify the process to obtain scientific data, when the success of the techniques lies precisely in the complexity of agroecological systems. Or the restriction on the floristic range that we can plant, in which it would be urgent to use more adapted plants, considering that native ones no longer can self-propagate and that plants from North Africa are the ones that would best adapt, are some examples of social and environmental conflicts felt in the reporting period.

## 1.2 Course of the Program

The reporting period was a year full of activity and achievements for Terra Sintrópica. Hiring a person for the communications area and developing a joint marketing strategy was fundamental to the visibility of TS.

TS began the implementation of a network of pilot areas for testing regenerative solutions in semi-arid Mediterranean forests, in partnership with the Municipal Council of Alcoutim, the Municipal Council of Mértola, the Center for Competences for Fighting Desertification, the Mértola Biological Station, and the Association of Forest Owners of Cumeadas do Baixo Guadiana. The implementation of these new plots contributed to positioning Mértola and Alcoutim at the forefront of forest regeneration and the fight against desertification, allowing the transfer of knowledge to territories with similar soil and climate characteristics. At the final of the year 3 plots managed by TS were implemented. The municipality implemented 3 small plots and the Forest Owners Association more 3 other medium plots on private areas. All these pilots are being monitored.

In Malhadinha (Agroecological and Regeneration Centre, now CARES), more vegetable garden areas were planted, demonstrating 15 agroecological practices, like associated and diversified crops, crop rotation with several strata or vertical layers, barriers and live fences, soil cover, biological nutrition, reduced tillage, pruning and addition of vegetal biomass, multiline and mixtures of varieties, management of tree lines, cover crops, live mulch, dead mulch, agroforestry, swales and adaptation of the traditional practice of wine plantation in agroforestry system. The tree nursery has been improved to gain efficiency.

The number of networks and partnerships increased exponentially, both due to better organization of visitation processes and better TS communication efficiency. There was a pronounced increase in the demand for partnerships and networks by many national and international entities, to which the promising results that are achieved and disseminated through the communication strategy contribute, but also through the mouth-to-mouth process. Several activities associated with these new partnerships have already made

At the level of the Local Food Network, two major results were achieved: a better organization of PREC, our local food hub, which today sells fresh local vegetables and fruits and other local products and regularly serves regenerative meals from regenerative foods, from local sources, cooked by a virtuous chef. At the end of the year, the beginning of participation in an AMAP system, in the nearest city, with Malhadinha products as the main supply, was also something to celebrate.

This activity in schools has been consolidating each year. All teachers and school coordinators have a special affection for this activity as they recognize that our program is well structured and that agroecological and agroforestry concepts are transmitted in a simple, practical and accessible way and learned/ acquired by the children.

The visitation program was improved, allowing an increase in the number of visits (individual and from partners and other entities). In 2023, CARES registered more than 400 visits.

## 1.3 Target Group

At the reporting time, the number of people previewed to be impacted by the total project is already achieved:

**Farmers:** More than 60 farmers participated in visits and training activities, conferences, or workshops organized by our program. Some of them (about 10) are already implementing their first steps to transition and ask for our help (consultancy, seedlings from the nursery or training). However, TS must still improve the business model, to allow the team to have time to offer these services in a structured way. 10 farmers were inspired by the Agereco Nautura Training (<https://projetoagereco.carrd.co/>) and other 5 female farmers participated in one program for female entrepreneurship, whose contents were produced and developed by the Terra Sintrópica team.

**Local Students:** 60 local vocational students and 70 primary school children were involved in visits and activities developed by TS and CARES.

**International Students:** 18 students from SIT . School for International Training (<https://studyabroad.sit.edu/>) and 6 students from Amsterdam (<https://portugal.sdg-challenge.com/>) visited and developed projects about the Terra Sintrópica and Mértola project or challenges.

**Researchers:** More than 50 researchers visited CARES in 2023, and many of them started new partnerships and common projects (see 1.4). As example, Inspired by the project at Terra Sintrópica, Arielle Nathan is now working on a research paper exploring the potential of implementing Syntropic Agriculture in New Mexico/United States.: "Portugal to New Mexico: Investigating the Applicability of Syntropic Agriculture to a Semi-Arid Continental Climate".

### Statements:

Miguel Altieri

<https://www.facebook.com/terrasintropica/posts/pfbid02GxXRUXnvJad7fkaoh1psARrxzm49gB3KunvajiAucqawYkMrUpzUDn2z228UEwLpl>

Soizic e Bots

<https://www.facebook.com/terrasintropica/posts/pfbid0Mk2g5y7WZag3FfRK6Y7WCRkyuaHPjVfjWeTMqg5Lw169rbGovBFQEhej9dhquDKPI>

Chantal

[https://www.peasofme.com/en/terra-sintropica-transforms-almost-desert-into-a-fertile-oasis/?fbclid=IwAR1guz5tRmzycku-7d5lxM8aqVem9YV\\_XfkYXrPDyt79ahA\\_rrrkiNgSJqk](https://www.peasofme.com/en/terra-sintropica-transforms-almost-desert-into-a-fertile-oasis/?fbclid=IwAR1guz5tRmzycku-7d5lxM8aqVem9YV_XfkYXrPDyt79ahA_rrrkiNgSJqk)

Norina

<https://www.facebook.com/terrasintropica/posts/pfbid023fPjVVch5wnLoSxd38CTgEEqaFx7Cy9XFZubn5EQJrd13AXb47WfK4zUGBbQRXG8I>

Elena e Yacobo

<https://www.facebook.com/centrodeagroecologiademertola/posts/pfbid0pvhKdtDoS94NdpdioBaJEuutNwYG7Yj3B1aNDc1JgLVczXiapxmTEBWBLpPiU4NRI>

Julio Medina

[https://m.facebook.com/story.php?story\\_fbid=pfbid0acNUjmLDCg44LT8EKAdcSRtUxGKnFnYFFG9jbpfMmF2SkETbVwETFYmxXuLHVjjql&id=100064819985850](https://m.facebook.com/story.php?story_fbid=pfbid0acNUjmLDCg44LT8EKAdcSRtUxGKnFnYFFG9jbpfMmF2SkETbVwETFYmxXuLHVjjql&id=100064819985850)

## 1.4 Stakeholders and Network

In the reporting period, several networks and new stakeholders contribute to the success of the program. Some examples:

**Confluence for agroecology** [<https://www.jornalmapa.pt/2023/05/02/confluencia-pela-agroecologia/>]

[<https://www.youtube.com/watch?v=kalNdZOHR0U>]

The confluence counted with the participation of Clara Inés Nicholls, Ph.D. , professor and Miguel A. Altieri , PhD, retired professor , both from Berkeley, University of California . Founders of the Latin American Scientific Society of Agroecology (SOCLA). They visit to Portugal in April 2023. The event allowed the mapping of agroecological experiences in the country and had more than 180 participants. Since this time, a group of people has been leading the organization of the Network, taking into account the Sociocracy 3.0 guidelines, focusing on a self-managed group that forms different groups for network management and the systematization of meeting results.

**Resilience Co- Design Workshop** [<https://www.mvarc.eu/resilience-self-assessment-tool>]

**LIFE GEOCARBON Project** [<https://www.lifegeocarbon.eu/?lang=es>]

Project in order to evaluate the sustainability of the agricultural practices that are currently adopted in the Malhadinha Garden and in 30 years if these practices are maintained, in relation to the capture and emission of carbon and compare with the results obtained for agricultural farms with practices conventional.

**SDG Challenge Portugal 2023** [<https://portugal.sdg-challenge.com/>]

**Projeto BIOTraCes** (<https://www.biotraces.eu/>) - CES (Centro de Estudos Sociais) at the University of Coimbra is the Portuguese research partner of the consortium and will participate with the “Mértola Future Lab” case study, in a partnership with Associação Terra Sintrópica. An opportunity to boost local food production and consumption aligned with local strategies for transformations for agrobiodiversity conservation.

**Project CCDesert** <https://ccdesert.pt>

**ROYAL COLLEGE OF ARTS | RS3: Alentejo Research Unit / Liquid Deserts Studio**

Research Unit working from the Environmental Architecture Masters course at the Royal College of Art. more info: <https://www.rca.ac.uk/study/programme-finder/environmental-architecture-ma/rs3-alentejo-research-unit-liquid-deserts-studio/>;

<https://drive.google.com/file/d/12rxYL1J9Q7olthFFZZZCnL2DEf8efeF7/view>

**PROTOCOL ERASMUS + CANÁRIAS**

(<https://www3.gobiernodecanarias.org/medusa/edublog/iesmenceybencomo/>)

In the end of 2023, TS signed the collaboration protocol with the Technical School for Rural Development of the Canary Islands (I.E.S. Mencey Bencomo) for the year 2024.

**Other partnerships:**

**Catarina Roseta Palma**, an environmental economist from **ISEG** in the NEXUS Net Forum of Stakeholders, Split, Croatia: [https://youtu.be/gzz\\_Pf0qWJw?si=jc1nse2lkodBShkE](https://youtu.be/gzz_Pf0qWJw?si=jc1nse2lkodBShkE)

## 1.5 Opportunities and Risks

**Risks:**

The biggest risk that we have is linked with the climate, (water storage and extreme temperatures), which can jeopardize many of our efforts and new pilots. The risk is higher as we are not allowed to use the more adapted plants and the consortiums that we believe would be perfect for the climate scenarios.

Other risks are national and international sociopolitical changes capable of reversing the programmatic lines of promoting agroecology and ecological restoration, special due to war conflicts.

**Opportunities:**

CARES positioning as a reference space in the fight against desertification and carbon neutrality in a semi-arid context.

CARES can be a reference space for the application of the Ecological Restoration Law, proving the possibility of producing and regenerating simultaneously.

The co-creation of a unique learning model based on location, collaborative governance, active landscape management, and regenerative bioeconomy.

## **1.6 Monitoring and Evaluation**



## 2. Impact

### 2.1 Achieved Goals / Outcomes

Achieved Goals / Outcomes reached thus far
<ul style="list-style-type: none"> <li>The Program actively contributes to the regenerative food production of the Local Food Network: PREC reinforce its sustainability as a local food hub; Horta do Cumbreal (inspired by sintropic practices) is delivering regenerative vegetables and fruits for primary schools; the Municipality has a program for local, organic fruit from 3 local farms; Horta da Malhadinha was invited to e the mais supplier of the nearest city AMAP program.</li> </ul>
<ul style="list-style-type: none"> <li>A regular Training and Capacity Program associated with the CARES is defined and implemented: the volunteer program was improved (30 volunteers in 2023); the visitation program was improved (more than 500 visits); the Food Evolution program was developed with CARES, in Mértola (40 trainees); the forest gardens school program was improved.</li> </ul>
<ul style="list-style-type: none"> <li>Ecological regeneration or regenerative agriculture actions were carried out in other spaces outside the CARES: 9 plots were implemented for testing, demonstration and monitoring in Mértola and Alcoutim; 2 new farmers (1500ha total) are adopting regenerative approaches in Mértola</li> </ul>
<ul style="list-style-type: none"> <li>The Agroecology and Regeneration Center is an activating element of the Laboratory for the regenerative future of semi-arid territories: 11 new partnerships/networks</li> </ul>

In 2023, PREC underwent restructuring, to improve its sustainability. Several strategic meetings were held to improve efficiency, always fulfilling its purpose. The place functions as a local food hub, where you can purchase local products and organic and regenerative vegetables. It currently serves an average of 30 meals/day (with vegetables from Malhadinha) and the local population is increasingly interested in the space, which also functions as a center for workshops and conversations related to local and regenerative food.

At the beginning of the school year, the municipality began a process of acquiring local and organic school fruit, involving 3 local suppliers (the only ones existing). Horta do Cumbreal, a social garden, was trained by TS to produce food for local primary schools.

As a result of better communication from TS and the excellent results of Horta da Malhadinha, a group of consumers, from the nearest city (Beja), invited our farmer to be the main supplier of AMAP de Beja, a basket delivery system, with co-responsibility, which started at the end of the year and currently has 20 consumers.

In 2023, TS organized many training sessions and workshops, as the Confluence for agroecology, Confluence for agroecology, Training of the Regenerative Agriculture aspect of the “Evolução Alimentar Program” in association with Rebundance (<https://rebundance.com/pt/chamar-o-futuro-2/programa-evolucao-alimentar/>) and the Soil Microbiology Workshop in association with Jake Corin from Symbiosis soil lab (<https://www.facebook.com/people/Symbiosis-Soil-Lab/100087221752750/>).

The visitors' program was improved (<https://terrasintropica.com/visita-guiada/>), helping TS sustainability and a better organization for teamwork, and also the Volunteers Program ([https://terrasintropica.com/participar\\_trashed/voluntarios/](https://terrasintropica.com/participar_trashed/voluntarios/)).

On the schools, the program included this year: garden space Implementation and maintenance. Playful pedagogical activities “hands on the soil” to transmit basic notions of reducing water consumption, covering the soil with vegetation (biomass) from pruning and harvest remains, the interaction of plants above and below ground, and microorganism activities. Around 100 people were involved (78 children, teachers, and educational support assistants). We also received school visits at Cares, (Horta da

Malhadinha) where children can understand the forest garden concept in a large area and can experiment to do activities on the farm or in the nurseries.

TS began in the implementation of a network of pilot areas for testing regenerative solutions in semi-arid Mediterranean forests, with partners such as the Municipal Council of Alcoutim, the Municipal Council of Mértola, the Center for Competences for Desertification Combat, the Mértola Biological Station, and the Association of Forest Owners of Cumeadas do Baixo Guadiana. 9 pilot plots were implemented and start to be monitored with partnership with CIBIO and Nova University of Lisbon. This activity contributed to positioning Mértola and Alcoutim at the forefront of forest regeneration and the fight against desertification, allowing the transfer of knowledge to territories with similar soil and climate characteristics.

In the tree nursery, it was a period of great achievements at a structural, functional, logistical, and operational level: irrigation conditions were improved, with equipment adapted to the characteristics of the space, making it more efficient, reducing water consumption, and making it more localized with less waste. Infrastructures were also improved with new materials to make the temperatures and ventilation conditions of the greenhouse better.

This improved the conditions for germination and plant development, increasing the production. In the last year, 2023, the nursery achieved a modest turnover of 5000 euros of 3000 plants sold, which shows that there is still a long way to go, but that there is a change in efficiency.

In 2023, TS was very dynamic building new partnerships and networks. In addition to those referred to the networks in point 1.4, we also mention the co-organization of the Degrowth Networking Annual meeting, in Mértola, in partnership with Terra Sintrópica, the partnership in the Penelope project, which links art and urban agroforestry and the Visit of the Ministry of Agriculture of the Kingdom of Morocco and the Federal Ministry of Food and Agriculture of Germany

This visit was promoted as part of the Morocco-Germany cooperation project, DIAF - Technical Agricultural and Forestry Dialogue, organized by FiBL (Research Institute of Organic Agriculture) and Terra Sintrópica Association, with logistical support from Mértola Municipal Council and the participation of INIAV ( National institute of agricultural and veterinary research), Ministry of Agriculture of Morocco, Moroccan Institute for Agricultural and Veterinary Research, and IFOAM - Organics International.

## 2.2 Adaptions and Innovations

Some unexpected outcomes have arisen:

The creation of a network of Regenerators, unexpected people, not identified in our target group: people in a personal and professional transition, who found an opportunity with TS to guide their path and be trained on the frontier of production/regeneration, and that can be activated as a collective space for transition.

The articulation of the regenerative challenge with other social concerns, such as the humanitarian reception of young Afghans

The transfer of south-north-south knowledge, namely the possibility of influencing the perception of the importance of this type of practice regardless of the edaphoclimatic context (e.g. Altieri thought, for example, that syntropy did not work in a semi-arid Mediterranean)

## 2.3 Lessons Learnt

The importance of demonstrating solutions in different approaches and contexts (when moving from production in a forest vegetable garden context, to forest restoration our credibility increased a lot)

The importance of having autonomy in terms of experimentation and demonstration: funding with severe limitations (for example which plants can or cannot be planted) drastically limits solutions and consequently results.

A need to open spaces for research/monitoring that are more anchored in the territorial context, integrated, interdisciplinary, and open to complexity.

The importance of inspiration as a driver for better involvement of children and local communities.

The importance of creating/maintaining a network of capable and motivated regeneration agents to carry out activities in the field, and the need to decently remunerate this work as a highly qualified activity.

The importance of partnerships and strategic vision in creating pilot areas, aligning efforts, and enhancing action

## 2.4 Outlook into 2024

2024 will be on CARES one year of management, maintenance, monitoring, and systematization of information. Evaluating the evolution of systems, understanding the necessary standards of practice, reinforcing analysis indicators, and communicating more and better (based on empirical observations and concrete monitoring data)

It is also a year in which all acquired knowledge will be systematized and organized in the format of an intensive training program based on theoretical principles and contextual practice. TS will also move towards partnerships with other farmers and private entities, in which their farms are articulated as CARES experimentation/monitoring satellites and learning spaces that will integrate a future training program.

We also expect to do a progressive evolution and increase active participation in all schools off Mértola: good results from dynamics and new activities stimulate creativity and new ideas. The more creative and diverse the activities are, the more feedback and positive involvement we get from children, adult educators, parents, and the community in general, therefore we are confident that it will be a very enriching next period.



## 3. Implementing Organisation

### 3.1 Major Changes, Challenges and/or Opportunities

The achievements and dynamics of the project have captivated other types of audiences, such as tourists, who are looking for a very particular experience (hiking, nature trails, culinary experiences, people with burnout looking for different experiences, or active elderly people wanting to collaborate on purposeful projects) and discover our work by chance and are enchanted with it. There is an opportunity for the future sustainability plan of TS, based on regenerative tourism, that can and should be considered. A proposal for funds was already made with this objective.

The evolution of the project toward a farm-to-fork version, targeting haute cuisine grounded on plant-based and fresh crop dishes, can be also an opportunity, with the new dynamics of PREC.

Hiring a person for the communications area brought several improvements to our project and the organization. Online communication was a huge part of the process of giving TS more visibility. With a wide variety of channels, we explored expanding our reach, and the association is currently present and active on the following platforms:

- **Profiles created before 2023:**

Facebook (TS and CARES); Instagram (TS); LinkedIn (TS); Vimeo (TS); ODS Local (TS and CARES).

- **Profiles created in 2023:**

**LinkedIn (CARES); Linktree (TS); Google Maps (TS and CARES); Explorer Land (TS and CARES); Youtube (TS); Restor (TS and CARES); Visit Mértola (CARES).**

Instagram followers increased by **50.47%**.

The mailing list started in 2023 and reached **619** contacts at the end of December.

Media presence increased by **300%** compared to 2022.

Throughout 2023, the communication actions were quite diverse; however, with emphasis on four pivotal aspects:

- **Crafting key elements** such as logos, marketing plan, visual identity, among other important communication aspects;
- **digital presence** on well-established platforms;
- frequency of content on **social media**;
- **promotion of one-off and recurring events.**

Taking that into consideration, we updated the Terra Sintrópica logo, changed the name of the Agroecology Center from CAEM to CARES, and created its logo, which has been added to formal communications such as presentations, email signatures, and so on, as well to the social media icons, for example.

### 3.2 Capacity Building and Organisational Development

To guarantee the team's well-being and cohesion, a partnership was formed with the Rebundance team, which holds alignment sessions every two months, supporting the construction of strategies or conflict management and weekly online meetings with the board.

Two members of TS have already carried out Rebundance's Creative Leadership program and in 2024, the CARES coordinator will also carry out the program (<https://rebundance.com/pt/home-2/>).

TS developed a participatory process to develop the communication and marketing plan. The plan was developed in a welcoming and intimate environment, over 2 days, in which the team carried out team-building activities and simultaneously helped to design the marketing and communication strategy, with the supervision of a specialist and external facilitation. The new communications collaborator was an active part of this process and was able to start his contributions with a strategy outlined for TS.

Terra Sintrópica was invited to join the Conscious Food System Alliance, from the United Nations program and one member participated in the 1st retreat at the Schumacher College, in England.

The team participated in advanced training with Ernst Gotsch and visited the Amadeco Salento project, in Italy, with Life in Syntropy

The team also participated in the Climate Shapers Bootcamp, from the Future Food Institute, in Polica Italy.

Several members of the team assist the Leadership program from the Food Evolution Program.

The team also was involved in the Farmers Community of Practice of the Regenerative Pastures Project, participating in their workshops, training, and visits throughout the year.



## 4. Finances

This year we had a positive remaining value of €34,521.97 due to a cash flow issue with the CCDesert project. For this project, payments are made after the expenses are presented, which led to a delay in receipt. Thus, the amount we had was an advanced payment for this project. In January 2024 we received the CCDesert costs reimbursement and so, we will rectify the situation this year.

<b>Total Income ATS 2023</b>	<b>Budgeted</b>	<b>Actual spended</b>	<b>Variance- available</b>
Own contribution	52 400,00 €	52 400,00 €	0,00 €
Local contribution - House for volunteers	12 600,00 €	12 600,00 €	0,00 €
Local contribution - Team travel in own vehicles	2 100,00 €	2 100,00 €	0,00 €
Local contribution - Office for the team	6 600,00 €	6 600,00 €	0,00 €
Funds by Leopold Bachmann Foundation	200 488,80 €	165 966,84 €	34 521,96 €
Carry-forward LB (surplus or deficit from the previous reporting year)	10 765,64 €	10 765,64 €	0,00 €
Drittes Millenium	31 436,58 €	32 778,14 €	-1 341,56 €
CC DESERT	96 368,30 €	96 368,30 €	0,00 €
Crowdfunding	13 243,89 €	3 500,68 €	9 743,21 €
Terra de Abrigo	35 984,89 €	17 827,35 €	18 157,54 €
IEFP	5 687,89 €	5 687,89 €	0,00 €
Hortas Florestas	3 335,19 €	3 335,19 €	0,00 €
<b>Total Income</b>	<b>471 011,18 €</b>	<b>409 930,03 €</b>	<b>61 081,15 €</b>
<b>Expenses regarding LB budget 2022</b>	<b>Budgeted</b>	<b>Actual spended</b>	<b>Variance- available</b>
1. General Expenses	66 145,84 €	62 333,67 €	3 812,17 €
2. Pilot & Demonstration Center Agro-Ecology	102 086,96 €	71 717,23 €	30 369,73 €
4. Monitoring e lobby	17 256,00 €	16 847,86 €	408,14 €
5. Unforeseen	15 000,00 €	15 068,07 €	-68,07 €
<b>Total Expenses</b>	<b>200 488,80 €</b>	<b>165 966,83 €</b>	<b>34 521,97 €</b>
<b>Surplus</b>			<b>34 521,97 €</b>

## 5. Further Information and Attachments

Please see also the Photo report and the following links:

Posts highlights:

Facebook CARES - [Programa Evolução Alimentar](#)

Facebook CARES - [CCDesert](#)

Instagram TS - [Interview on RTP's TV Programa](#)

Instagram TS - [TS as vegetable supplier of Amap Beja](#)

Instagram TS - [Morocco's Government comitive visit to CARES](#)

Facebook TS - [Field to Fork December](#)

Facebook TS - [Patrick Worms visit](#)

LinkedIn TS - [Jornadas do Mundo Rural](#)

LinkedIn TS - [Field to Fork September](#)

Media highlights (Portuguese and international):

27/03/2023 - [Au Portugal, ils font pousser des légumes dans l'une des communes les plus arides d'Europe | Reporterre - Le Média de l'écologie](#)

03/05/2023 - [Entrevista Marta Cortegano | Podcast Investing in Regenerative Agriculture and Food](#)

05/06/2023 - ['Gente que faz mais pelo País': Agricultura viável na seca | Jornal Correio da Manhã](#)

15/06/2023 - [Seca. O deserto não está tão longe assim | Notícias Magazine \(JN\)](#)

24/07/2023 - [Podcast Próprio para Consumo: o que é que o meu pão tem a ver com alterações climática? | Público](#)

30/10/2023 - [Anúncio do Prémio Quercus Individual atribuído à Marta Cortegano | Agricultura & Mar](#)